

# Weather sensors



## Performance features

- » Suitable for connecting to all D+H SHEV and ventilation control panels
- » Also available with radio signal (REM 801-RC)
- » Flexible installation
- » Integrated wind signal emitter (optional)

Type	Art. No.	Description	Technical data
------	----------	-------------	----------------

VRS 10 30.300.90



**Rain detector**

- » For rain monitoring of ventilation flaps in conjunction with 24 V DC SHEV and ventilation control panels
- » Rain signal is stored for approx. 2 minutes (rain hold time)
- » Rain sensor in compact design, 24 V DC
- » Heated sensor area

Supply	24 V DC / 0.05 A
Type of protection	IP 65
Temperature range	-20 °C ... +60 °C
Housing	Polycarbonate
Colour	Grey (~ RAL 7035)
W x H x D	50 x 70 x 66 mm
Weight	0.40 kg

Type	Art. No.	Description	Technical data
------	----------	-------------	----------------

REM 42 30.301.00



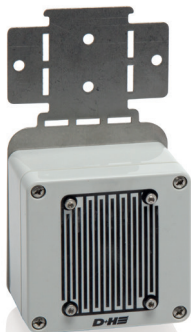
**Rain detector**

- » For rain monitoring of ventilation flaps in conjunction with 24 V DC drives and D+H control panels
- » Rain signal is stored for approx. 2 minutes (rain hold time)
- » Heated sensor area

Supply	24 V DC / 0.2 A
Type of protection	IP 65
Temperature range	-20 °C ... +60 °C
Housing	Polycarbonate
Colour	Grey (~ RAL 7035)
W x H x D	85 x 150 x 110 mm
Weight	0.50 kg

Type	Art. No.	Description	Technical data
------	----------	-------------	----------------

REM 801-RC 30.302.20



**Wireless rain detector**

- » Presence monitoring in wireless operation
- » Signal output via radio or switching contact
- » Integrated test function for controlling the reception quality
- » Rain signal is stored for approx. 5 minutes (rain hold time)
- » Heated sensor area (not possible in battery operation)

Input voltage	24 V DC
Type of protection	IP 33
Temperature range	-20 °C ... +60 °C
Radio frequency	868.3 MHz / FSK
Housing	Polycarbonate
Colour	Grey (~ RAL 7035)
W x H x D	80 x 82 x 55 mm
Weight	0.50 kg

Type	Art. No.	Description	Technical data
------	----------	-------------	----------------

REM 230

30.300.20

**Rain detector**

- » For rain monitoring of ventilation flaps in conjunction with 230 V AC drives
- » Rain signal is stored for approx. 2 minutes (rain hold time)
- » Switching contact: Change over contact 230 V AC, max. 5 A
- » Heated sensor area



Supply	230 V AC / 50 Hz / 5 VA
Type of protection	IP 65
Housing	Polycarbonate
Colour	Grey (~ RAL 7035)
W x H x D	85 x 150 x 120 mm
Weight	1.30 kg

Type	Art. No.	Description	Technical data
------	----------	-------------	----------------

WRG 82

30.301.10

**Wind / rain sensor**

- » Rain signal is stored for approx. 2 minutes (rain hold time)
- » Wind switching threshold via DIP switch configurable to 4 or 6 Bft.
- » Signal retention time of the wind signal for approx. 10 minutes
- » In combination with WE 516, WME 43 or WRZ 8000, it is possible to continuously adjust the wind switching threshold between 2-8 Bft.; the signal retention time can be selected between 1-15 min.
- » Heated sensor area



Supply	24 V DC / 0.2 A
Type of protection	IP 54
Temperature range	-20 °C ... +60 °C
Housing	Polycarbonate
W x H x D	85 x 100 x 400 mm
Weight	2.00 kg

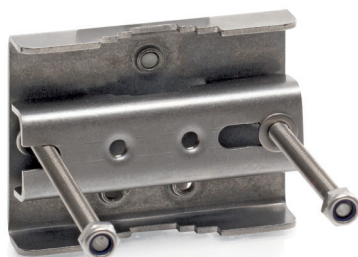
Type	Art. No.	Description	Technical data
------	----------	-------------	----------------

AMB

70.600.05

**Antenna mast mounting**

- » Suitable for installation to an antenna mast for diameters of 42 to 60 mm



Colour	Silver
Weight	0.35 kg