

# LT 84 / LS 84 / SLT 42



## Performance features

- » For controlling ventilation drives
- » Self-explanatory symbols
- » Versions for flush-mounted and surface-mounted installation and for moisture-prone areas

Type	Art. No.	Description	Technical data
------	----------	-------------	----------------

LT 84-U 63.701.29

**Ventilation button**

- » For controlling a ventilation group
- » Ventilation OPEN / STOP / CLOSED via double button with 2 unlocked normally open contacts
- » For installing in 55 mm flush-mounted socket (not included)



Input voltage	24 V DC
Type of protection	IP 20
Housing	Plastic
Colour	White
W x H	80 x 80 mm
Weight	0.15 kg

Type	Art. No.	Description	Technical data
------	----------	-------------	----------------

LT 84-U-SD 63.701.35

**Ventilation button**

- » For controlling a ventilation group
- » Ventilation OPEN / STOP / CLOSED via double button with 2 unlocked normally open contacts
- » With integrated LED readout OPEN
- » For installing in 55 mm flush-mounted socket (not included)



Input voltage	24 V DC
Type of protection	IP 20
Housing	Plastic
Colour	White
W x H	80 x 80 mm
Weight	0.15 kg

Type	Art. No.	Description	Technical data
------	----------	-------------	----------------

LT 84-U-V 63.701.30

**Ventilation button**

- » For controlling a 230 V AC ventilation group
- » Ventilation OPEN / STOP / CLOSED via double button; buttons mechanically interlocked; STOP by releasing the button
- » For installing in 55 mm flush-mounted socket (not included)



Input voltage	230 V AC
Type of protection	IP 20
Housing	Plastic
Colour	White
W x H	80 x 80 mm
Weight	0.30 kg

Type	Art. No.	Description	Technical data
------	----------	-------------	----------------

LS 84-U-V

63.701.45

**Ventilation switch**



- » For controlling a 230 V AC ventilation group
- » Ventilation OPEN / STOP / CLOSED via double button; buttons mechanically interlocked; STOP by repeated/renewed press of rocker switch back to starting position
- » For installing in 55 mm flush-mounted socket (not included)

Input voltage	230 V AC
Type of protection	IP 20
Material	Plastic
Colour	White
W x H	80 x 80 mm
Weight	0.30 kg

Type	Art. No.	Description	Technical data
------	----------	-------------	----------------

LT 84-U-W

63.701.31

**Ventilation switch**



- » Automatic switch for weather/temperature ON / OFF
- » For installing in 55 mm flush-mounted socket (not included)

Input voltage	24 V DC
Type of protection	IP 20
Housing	Plastic
Colour	White
W x H	80 x 80 mm
Weight	0.30 kg

Type	Art. No.	Description	Technical data
------	----------	-------------	----------------

SLT 42-U

30.401.10

**Key vent button**



- » For manually opening and closing a ventilation group in conjunction with D+H SHEV or ventilation control panels
- » Function: Ventilation OPEN / CLOSED via key operated changeover contact
- » For installing in deep 55 mm flush-mounted sockets (not included)
- » Profile semi-cylinder not included in scope of supply

Input voltage	24 V DC
Type of protection	IP 20
Housing	Plastic
Colour	White
W x H	80 x 80 mm
Weight	0.15 kg

Type	Art. No.	Description	Technical data
------	----------	-------------	----------------

SLT 42-U-SD

30.400.50

**Key vent button**



- » For manually opening and closing a ventilation group in conjunction with D+H SHEV or ventilation control panels
- » Function: Ventilation OPEN / CLOSED via key operated changeover contact
- » With integrated LED readout OPEN
- » For installing in deep 55 mm flush-mounted sockets (not included)
- » Profile semi-cylinder not included in scope of supply

Input voltage	24 V DC
Type of protection	IP 20
Housing	Plastic
Colour	White
W x H	80 x 80 mm
Weight	0.15 kg

Type	Art. No.	Description	Technical data
------	----------	-------------	----------------

SLT 42-A

30.400.30

**Key vent button**



- » For manually opening and closing a ventilation group in conjunction with D+H SHEV or ventilation control panels
- » Function: Ventilation OPEN / CLOSED via key operated changeover contact
- » Profile semi-cylinder not included in scope of supply

Input voltage	24 V DC
Type of protection	IP 54
Housing	Aluminium
Colour	Light grey
W x H x D	70 x 90 x 65 mm
Weight	0.45 kg

Type	Art. No.	Description	Technical data
------	----------	-------------	----------------

SLT 42-A-SD

30.400.40

**Key vent button**



- » For manually opening and closing a ventilation group in conjunction with D+H SHEV or ventilation control panels
- » Function: Ventilation OPEN / CLOSED via key operated changeover contact
- » With integrated LED readout OPEN
- » Profile semi-cylinder not included in scope of supply

Input voltage	24 V DC
Type of protection	IP 54
Housing	Aluminium
Colour	Light grey
W x H x D	70 x 90 x 65 mm
Weight	0.45 kg

Type	Art. No.	Description	Technical data
------	----------	-------------	----------------

LT 84-A 63.701.36

**Ventilation button**

- » For controlling a ventilation group
- » Suitable for surface-mounted installation in moisture-prone areas
- » Ventilation OPEN / STOP / CLOSED via double button with 2 unlocked normally open contacts

Input voltage	24 V DC
Type of protection	IP 44
Housing	Plastic
Colour	Light grey
W x H x D	70 x 70 x 45 mm
Weight	0.20 kg



Type	Art. No.	Description	Technical data
------	----------	-------------	----------------

AP-LT 63.701.33

**Surface-mounted housing, single**

- » For holding a key vent button or vent button for surface-mounted installation

Housing	Plastic
Colour	White
W x H x D	80 x 80 x 35 mm
Weight	0.10 kg



Type	Art. No.	Description	Technical data
------	----------	-------------	----------------

AP2-LT 63.701.34

**Surface-mounted housing, double**

- » For holding a key vent button or vent button for surface-mounted installation

Housing	Plastic
Colour	White
W x H x D	150 x 80 x 35 mm
Weight	0.20 kg



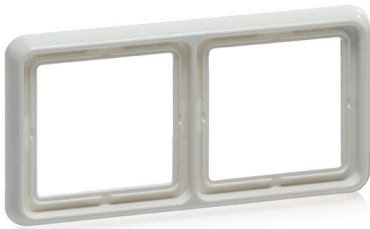
Type	Art. No.	Description	Technical data
------	----------	-------------	----------------

LT 84-R2

63.701.32

**Double frame**

- » For combining two key vent button or vent button in flush-mounted installation



Material	Plastic
Colour	White
W x H	150 x 80 mm
Weight	0.10 kg

Type	Art. No.	Description	Technical data
------	----------	-------------	----------------

PHZ 28

70.600.53

**Profile semi-cylinder**

- » For key vent button (SLT)
- » Including 3 keys



Weight	0.15 kg
--------	---------